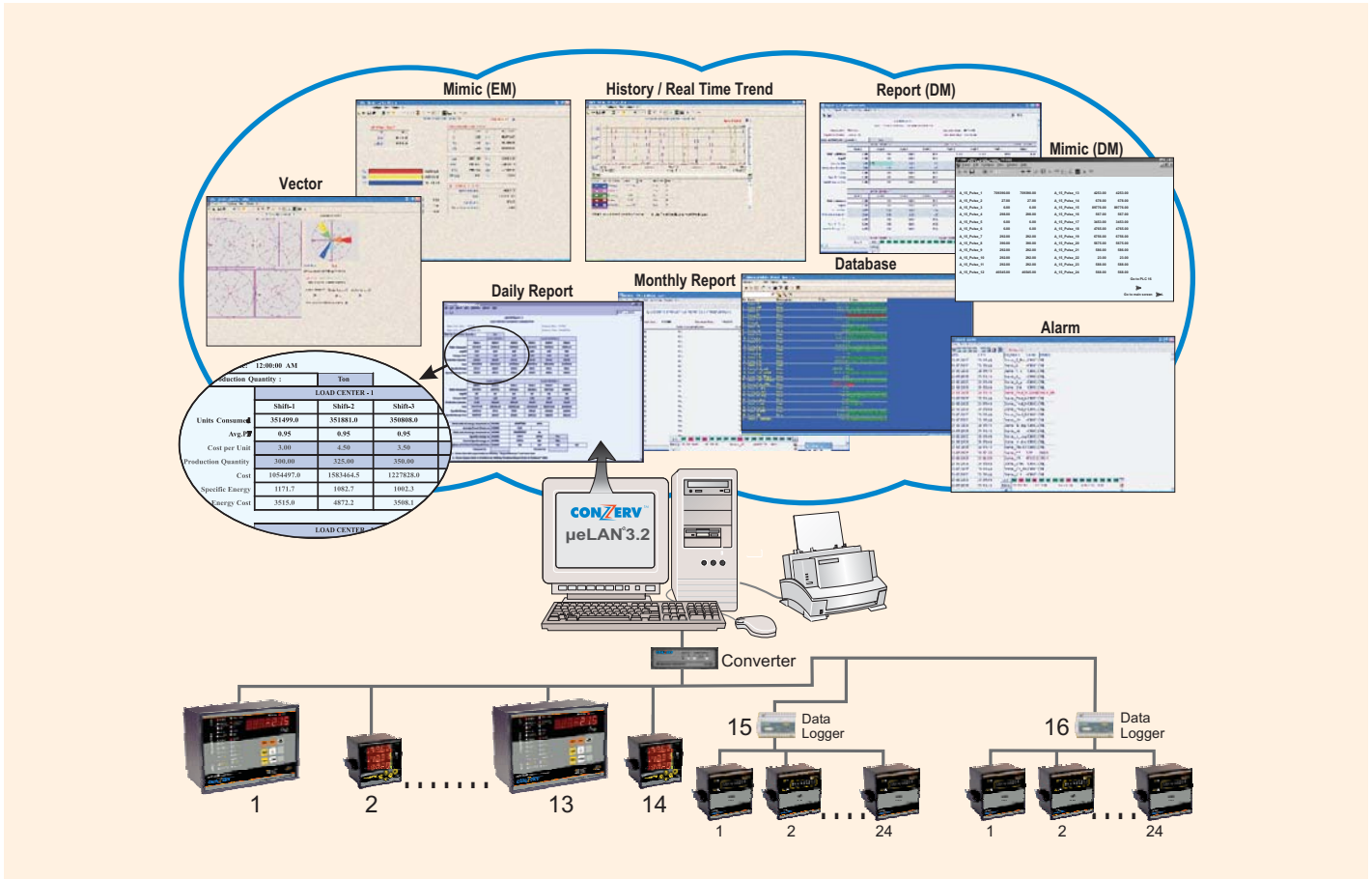


µeLAN® 3.2 an Innovative, Cost Effective Tool to Monitor & Reduce your Electrical Energy Bills. A pre-packaged, plug & play system.

µeLAN® 3.2 Energy Management Networks



µeLAN® 3.2 is a totally indigenous, state of the art SCADA software package that runs under all Windows operating systems and supports standard features required for an Electrical Energy Management System. µeLAN® 3.2 communicates with sixteen devices (First fourteen devices are Conzerv EM3000 series and/or EM6000 devices and last two Devices are LM24 Data Loggers that support 48 Conzerv DM52 series Energy Meters). µeLAN® 3.2 supports on-line monitoring of various parameters, generating history information, and periodic report.

µeLAN® 3.2	
1	Supports 16 nodes (First 14 EM 3000 and/or EM 6000, Last two LM24 Data Loggers)
2	Tabular View provided in HMI
3	Print and snapshot of HMI Screens
4	History log View displays tag names in columns and values in rows for easier viewing and comparison
5	Easy to install, Plug and Play Energy Management Software
6	Now runs on all Windows Operating Systems.
7	Special Reports through Excel
8	Remote Reports Facility
9	Piracy protection through hardware key



µeLAN [®] 3.2 Software Specification	
No. of physical tags (Electrical Parameters)	594
No. of EM 3000/EM 6000 instruments	Any combination upto 14
No. of LM24 Data Logger instruments	Supports upto 2 (24X2 = 48 DM 52 energy meters)
No. of parameters per EM to be transferred to PC	39
No. of parameters (DMs) per PLC to be transferred to PC	24
No. of mimic (values display) pages	16
No. of trend pages	14
No. of vector pages	4
No. of Instruction pages	1
No. of pens per trend	8 Preset. Maximum is 20
Archiving	Supported on Windows compatible internal or external HDD or MO Drive. (Requires drivers from drive supplier)
Duration of storage of historical data in HDD	Storage until 90% of HDD is full, after which old data will be purged.
Alarms	Arranged in 16 Groups. (Can be set by entering values of tag triggering limits)
Reports	<p>I Basic Reports</p> <ul style="list-style-type: none"> • Daily shiftwise report (each shift is eight hours) • Daily report for EMs 1 to 14 • Daily report for Data Logger 15 and 16 • Monthly unit consumption and cost in tabular form. • Monthly Report for EMs 1 to 14 • Monthly Report for Data Logger 15 & 16 <p>II Special Reports</p> <ul style="list-style-type: none"> • Runs on µeLAN[®] machine and also on remote machine • User creatable Daily Report Templates • Date to Date reports <p>User entry currency cell is provided</p>

System Requirements	
Hardware	
PC	Pentium III or better
RAM	Minimum 128 MB if system is dedicated for µeLAN [®] 3.2 otherwise 256 MB is needed.
Hard disk capacity	10 GB or more Minimum 1 GB free Disk space required before installation
Monitor resolution	800x600 with minimum 256 colors
Serial ports	COM1 to COM 4 ports
Parallel port	Min 1 (LPT1: for Hardware key, Printer can be connected through Hardware Key)
USB port	Optional. Required only if USB hardware key is used.
CDROM drive	48X or above
Software	
Operating system	Windows 98 SE / Windows Me / Windows 2000 Professional with SP3/ Windows XP Professional with SP1/ Windows 2000 Server / Windows 2003 Server
Internet Explorer	IE 4.x or above
Office Suite	MS Excel 2000
Devices (RTU)	
Conzerv Meters	16 Devices / Remote Units {14EMs (EM 3000/EM 6000) and 48 DM 52s that can be connected to 2 LM24 Data Loggers are supported}
Accessories	232 / 485 Data Converter, Beldan cable and connector kits (9 pins) & control cables.

Conzerv strives for continuous product innovation. Product specifications are therefore subject to change without notice. **CONZERV** is a Registered Trade Mark of Conzerv Systems Pvt Ltd

Energy Audits, Power Quality Audits, Tuned Harmonic Filters, Training on Energy Efficiency, Energy Management Systems, Reactive Power Compensation, Block Reactors, Power Factor Improvement, Multi-Function Meters, Intelligent Power Factor Controllers, Power Analysers, Portable Palm Top Analysers, Genset Synchronisation Meters, AMF Relays, Electronic Energy Meters, Digital Panel Meters, Static Watt Hour Meters, Power Capacitors HT & LT, Current Probes & Voltage Probes.

Conzerv Representative	
-------------------------------	--

Customer Help Desk 1600 425 0555 (Toll Free All India from BSNL / MTNL lines) Or Call 080 2852 0604 (Standard Charges Apply)

Email contact@conzerv.com

www.conzerv.com